



Morton Smith-Dawe
LIMITED

Seed Potato & Produce Suppliers

P0 Box 37139

Halswell

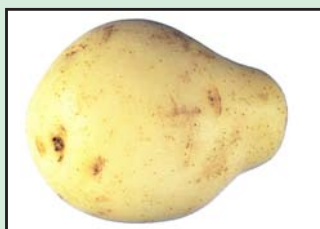
Christchurch 8245

Email: mortonsmith_dawe@xtra.co.nz

Common Potato Problems Found In The Home Garden

Unless specified otherwise, photographs A to C show increasing levels of each quality defect, as depicted in the Product Description Language

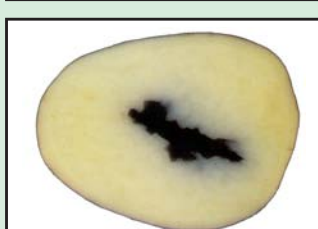
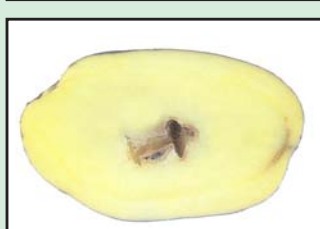
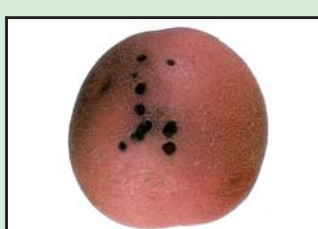
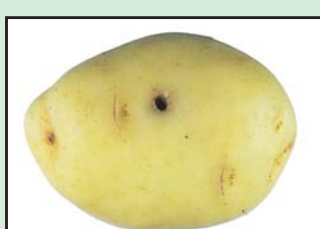
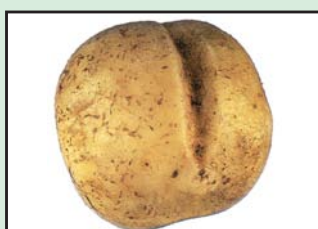
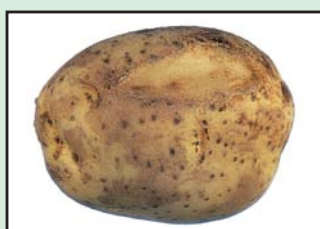
A



B



C



MALFORMATION

- Caused by soil and climate conditions, variations in water supply or Rhizoctonia fungus
- Presents problems for food preparation

GREENING

- Caused by exposure to light
- Can occur in brushed and washed tubers
- Green tubers can be toxic and should not be eaten

GROWTH CRACKS

- Caused by a sudden rise in water supply to growing tubers
- May become diseased if they are unable to heal properly

SKINNING

- Caused by abrasion of tubers
- Usually seen in “new” potatoes
- Can result in shrivelling and entry of disease

RHIZOCTONIA

- Caused by a soil-borne fungus
- Appears as dark, soil-like clumps; hard to remove
- Blemishes the skin and affects growth

OTHER BLEMISHES

- Silver scurf (shown) and black dot caused by fungi
- Skin russetting caused by salts or undecayed organic matter in the soil
- Mainly cosmetic defects

SCABS

- Powdery scab (shown) caused by fungus
- Common scab caused by a bacterium
- Depth of scab is the main effect on tuber quality

ROTS

- Caused by bacteria or fungi
- Often infect through a skin wound
- Include soft rot, pink rot etc (not shown)

INSECT DAMAGE

- Can occur in the field or in storage
- Internal damage may be worse than external
- Can be caused by moths, crickets, beetles etc.

INTERNAL DEFECTS

- A. **Brown fleck** - nutrition and temperature effects
- B. **Hollow heart** - caused by variations in water supply
- C. **Black heart** - caused by lack of oxygen